

# Wycliffe Houses

## Haywardsfield Hall (School House)

A house called Manny's Place was a medieval copyhold of Stonehouse manor, probably timber-framed with an adjoining barn, and facing north towards Bath Road, with about 40 acres of land near the house.

In 1558 it was held by Richard Mill, a small farmer who, in 1574, left his son Richard 'money to maintain him at scole'.

The 17<sup>th</sup> century occupiers were all clothiers, William Warner, Samuel Ball, Richard Nash and John Andrews. A stone dated 1694 was once to be found in School House courtyard, dating a rebuilding by John Andrews. His son John Andrews rebuilt the west wing. He died in 1778, leaving his estate to his nephew William Cole then to John Dimmock.

In 1803 the home of William Cole Esquire still faced north through an open courtyard to the road but, by 1839, the approach had been turned round with a drive curving south to Bristol Road.

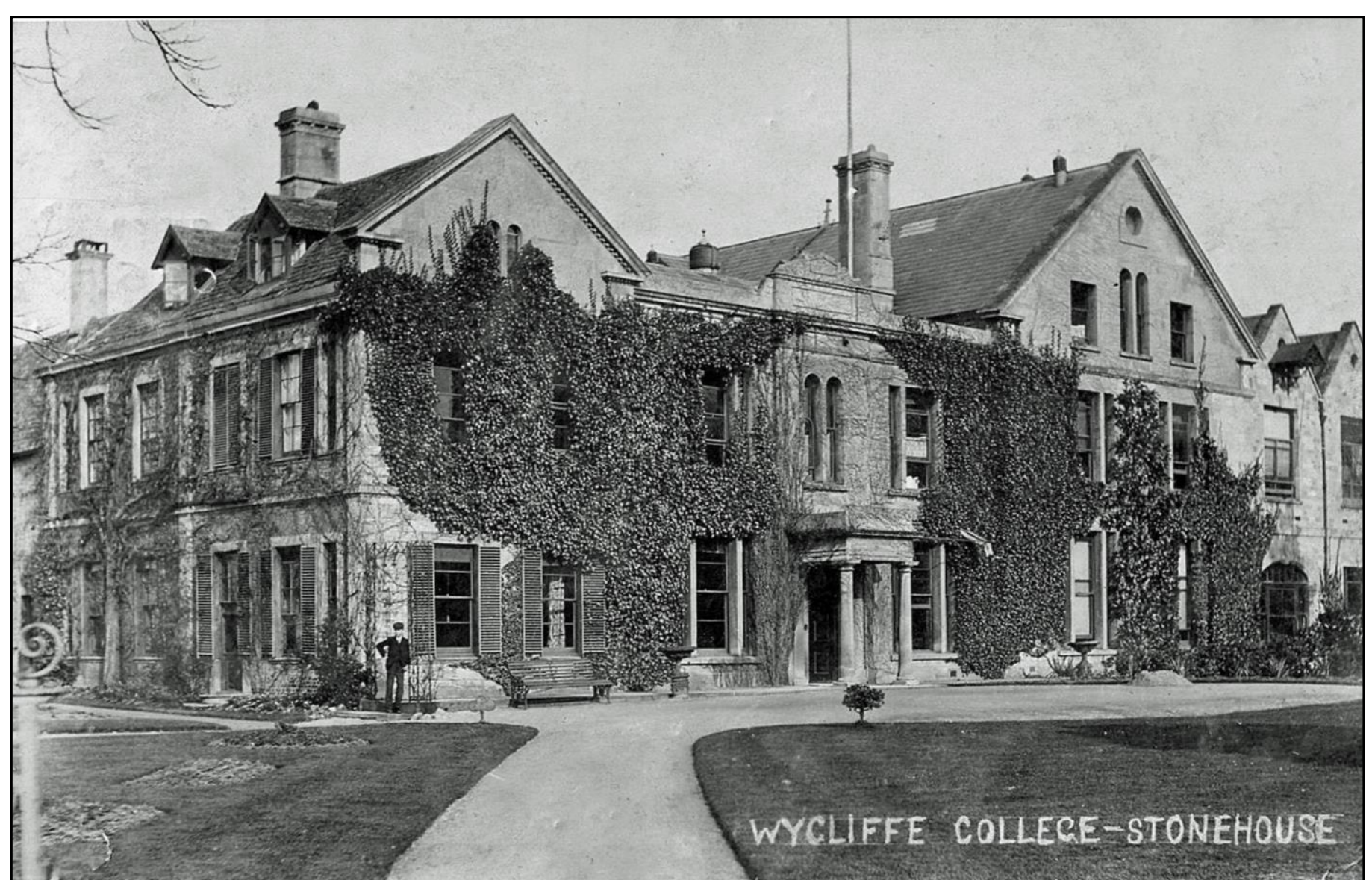
John Dimmock went bankrupt in 1829. The house and stables with 225 acres of land, called Haywards End, occupied by Charles Stephens, clothier, was bought at auction by the National Provincial Bank. The name Haywards End was changed to Haywardsfield Hall. In 1881 it was bought by G W Sibly to found his new school, Wycliffe College. The Siblys closed the courtyard on the north side, remodelled the house, and converted the stables into further school premises, where they remain in use today.



*Haywardsfield Hall from a water colour 1865*



*Haywardsfield Hall 1882*



*Wycliffe College School House c.1900*



*Wycliffe College School House 2012*

